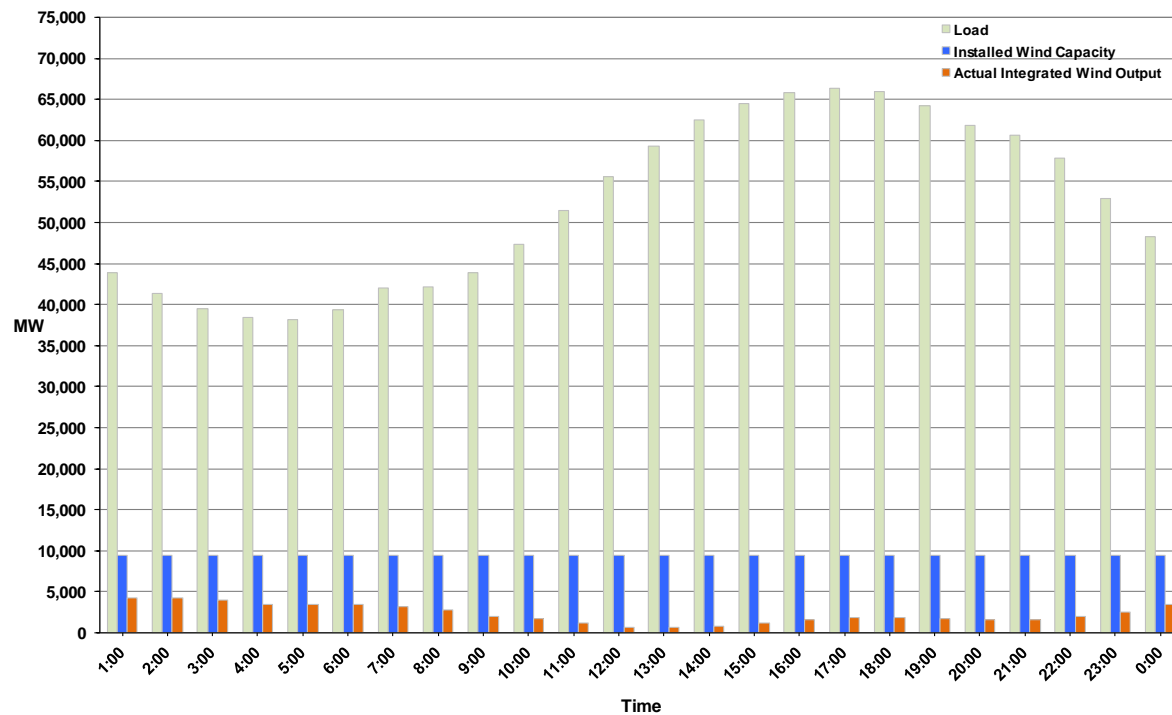




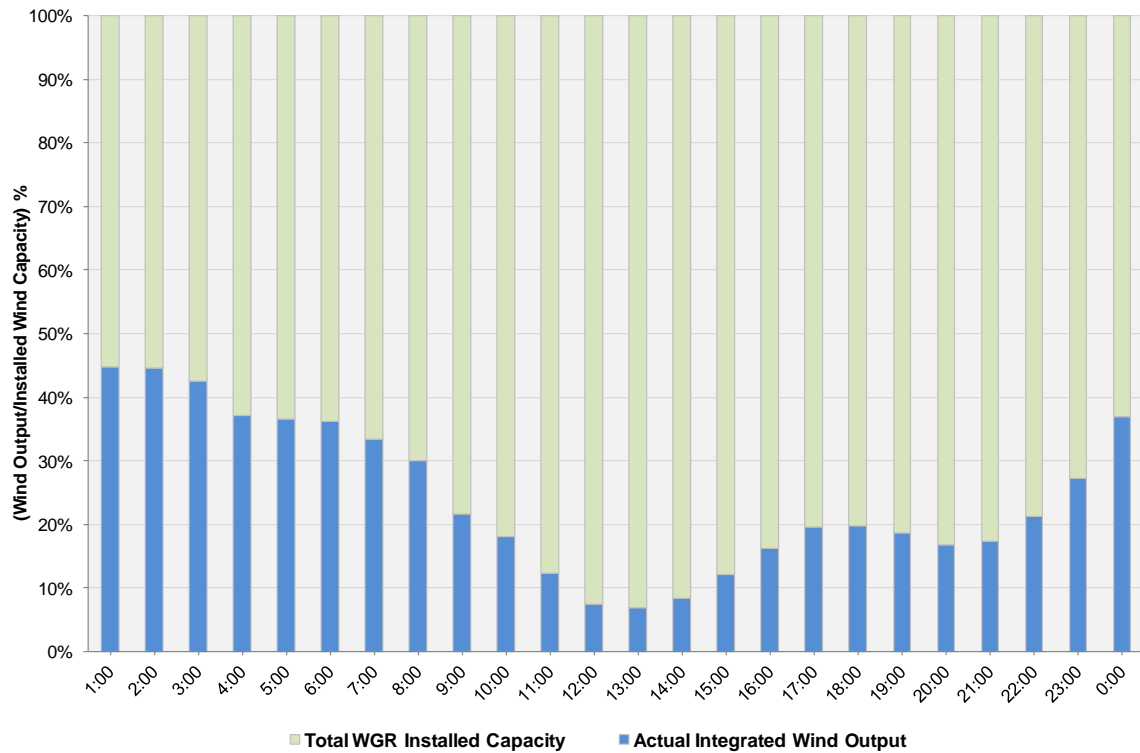
## ERCOT Grid Operations Wind Integration Report: 08/22/11

Peak Load	<b>66,390 MW</b>
Load Peak Hour	<b>17</b>
Wind over Peak	<b>1,839 MW</b>
Wind Record 06/19/11	<b>7,355 MW</b>
Max Wind Value	<b>4,273 MW</b>
Wind Peak Time	<b>01:27:00</b>
Wind Integration %	<b>10.30%</b>

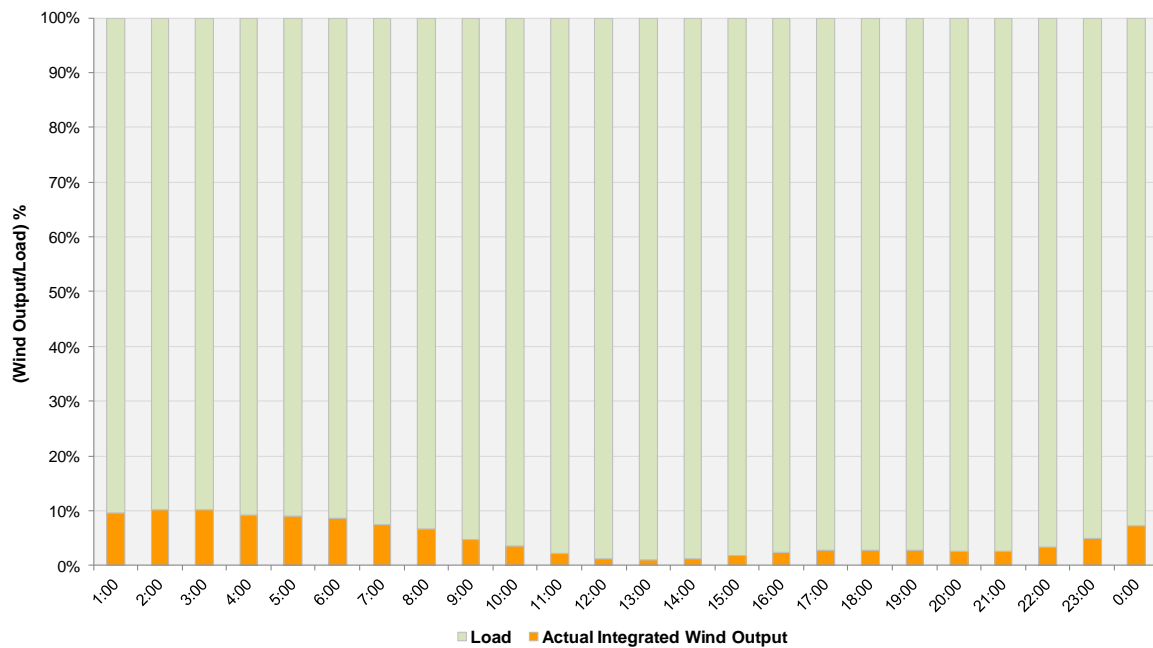
**Hourly Average Actual Load vs. Actual Wind Output  
08-22-2011**



**Actual Wind Output as a Percentage of the Total Installed Wind Capacity**  
**08-22-2011**



**Actual Wind Output as a Percentage of the ERCOT Load**  
**08-22-2011**



ERCOT Load vs. Actual Wind Output 8/15/2011 - 8/22/2011

